

# VBS

## ADOPT A PROP

Thank you for helping us to make a splash with VBS by turning our building into a beachy, ocean adventure!

Please peruse the projects listed below to see which ones most interest you. Once you have chosen your project, please sign up on the SignUpGenius or on the Sign-Up Table on Sundays.

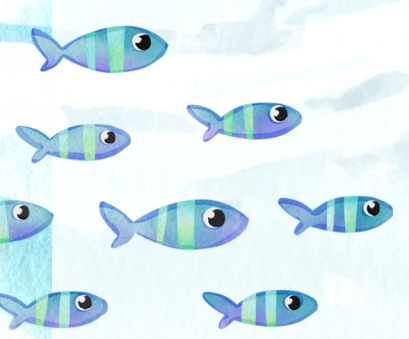
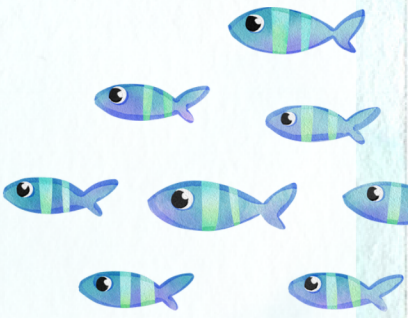
We are happy to provide the materials for your project or you can choose the materials of your choice. Just let us know which items you need and we'll have them for you Sunday.

Thanks again for helping kids in our community dive into the truth about God!





# ADOPT-A-PROP PROJECTS

- 
- 
1. Cardboard Coral and Seaweed
  2. Cardboard Submarine
  3. Chinese Lantern Fish
  4. Coffee Filter Coral
  5. Coffee Filter Tall Coral
  6. Cricut Fish
  7. Cupcake Liner Fan Coral
  8. Cut Out Wall Decor
  9. Egg Carton Barnacles
  10. Ice Cooler Treasure Chest
  11. Jellyfish
  12. Loofah Sponge Stick Coral
  13. Make a Coral Reef
  14. Ocean Portholes
  15. Packing Peanut Coral
  16. Paper Anemones
  17. Paper Chain Octopus
  18. Pipe Cleaner Coral
  19. Plastic Bottle Coral
  20. Pool Noodle Coral
  21. Pool Noodle Coral/Seaweed
  22. Pool Noodle Crabs
  23. Pool Noodle Fish
  24. Sea Life Silhouettes
  25. Seaweed Vines & Ocean Waves
  26. Sunken Ship
  27. Tissue Paper Coral
  28. Toothpick Sea Urchins
  29. Tube Coral
  30. Tube Sponges
- 

**Project  
directions are  
in the page  
order listed  
here.**



# ADOPT A PROP

## cardboard coral & seaweed

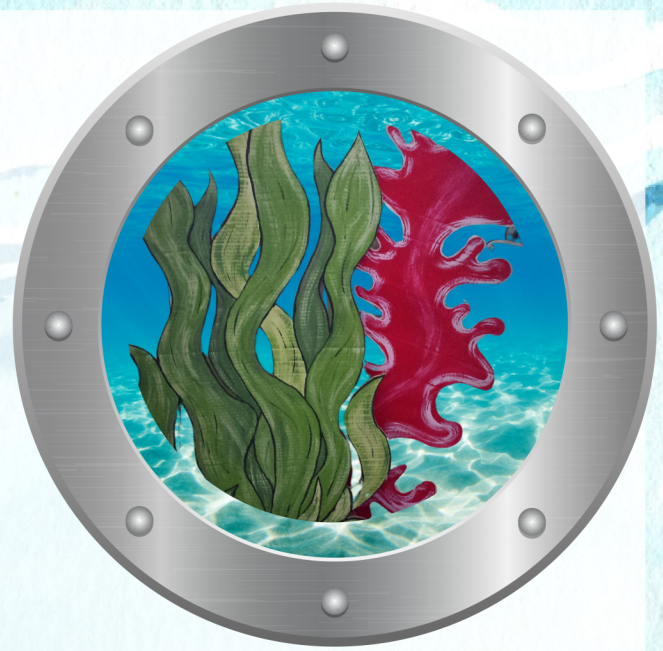


### supplies

- Cardboard
- Scissors or Xacto Knife
- Paint

### directions

- This is a creative project that is entirely up to you!
- We have lots of places where we'd love to line walls with big splashes of seaweed and coral.
- I can provide templates that can be projected or you can use your imagination and freehand (possibly aided by Google/Pinterest).
- We have cardboard that has been donated to provide to you (although if you have access to foam or other materials, you are welcome to use something else).
- We'd love lots of shapes and sizes of coral and sea plants. There is no right or wrong way to make this...it's all up to you!
- Let us know if you need any supplies!





# ADOPT A PROP

## cardboard submarine



### supplies

- Large sheets of cardboard
- Paint
- Paper or recyclables for embellishments
- Possibly a tube for the periscope
- Your fabulous imagination!

### directions

- This is a creative project that is entirely up to you!
- We need 2 submarines, one for a hallway and one for a preschool classroom.
- Both should be anywhere between 6 and 12 feet long (we're flexible!)
- I recommend scouring Google and Pinterest for some ideas and then deciding on a design that works well for you and that you would find fun to make.
- Let us know if you need any supplies!
- We have 2 sign-up slots for this project: 1 for each submarine.





# ADOPT A PROP

## chinese lantern fish

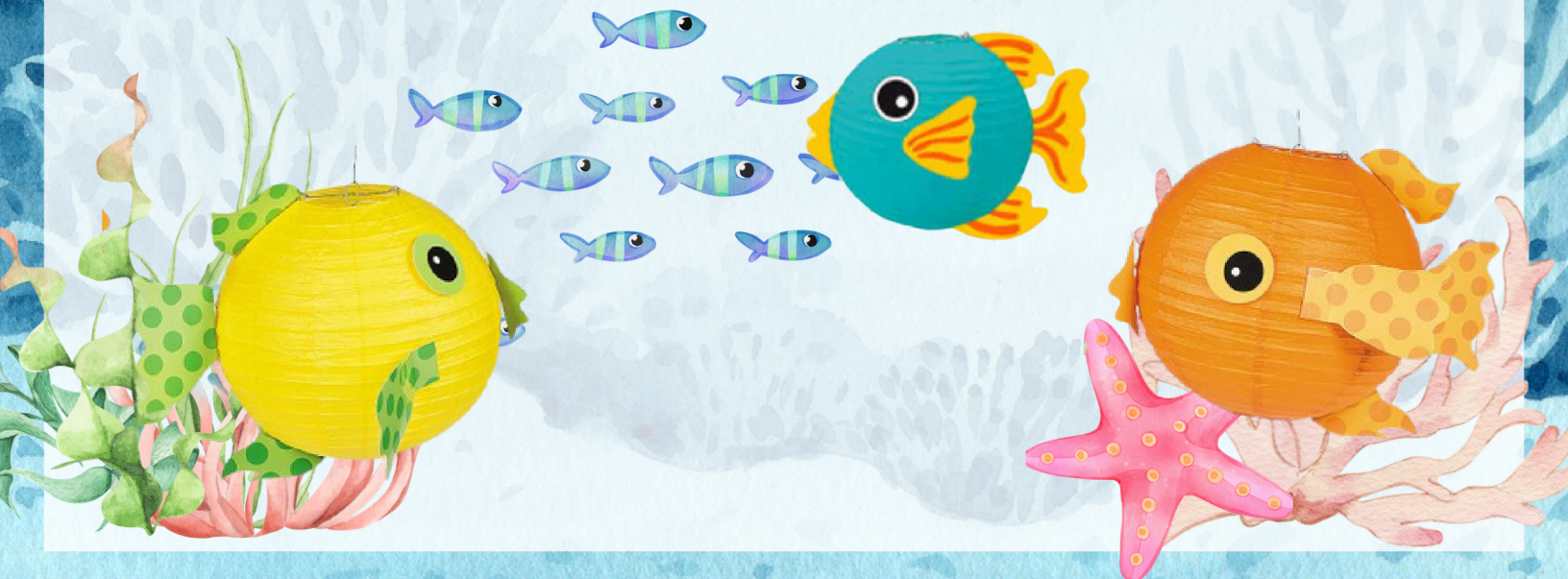


### supplies

- Paper Lanterns
- Paint (may not be needed)
- Scissors
- Construction paper
- Tissue paper
- Glue/Glue sticks
- Scotch tape

### directions

- Assemble the paper lantern.
- If the lantern has a space theme from last year and needs to be painted, do that first.
- Cut fins and possibly lips from construction paper and/or tissue paper.
- Glue these embellishments onto the paper lantern.
- Cut a circle out of white paper and a smaller circle out of black paper. Glue these on as eyes for the fish.
- No two fish need to look alike. Use your creativity to make festive fish to hang from the ceilings.





## supplies

- 

- There are 2 easy options for coloring the coffee filters (Your choice!)
  - OPTION 1: Dye them before making the coral: Dip half-inch stacks of coffee filters into bowls with water and food coloring (liquid or gel works); Sit them on top of a jar to air dry for a couple hours. Toss them in your clothes dryer for about 10 minutes (this will complete the drying process and separate them); Stack them up and they're ready to go.
  - OPTION 2: Spray paint them after the coral is made: Go ahead and craft the coral. When it is complete, lightly spray paint the coral to add the desired color.
- Flip a bowl or tub upside down. Working in sections, add some hot glue to the bowl.
- Scrunch the bottom of the coffee filter and press it into the glue.
- Continue this process until the entire bowl is covered.
- Note: Containers with other shapes work well too. Coral comes in countless shapes and sizes! Be creative and experiment.
- Please make at least 12 corals.





# ADOPT A PROP

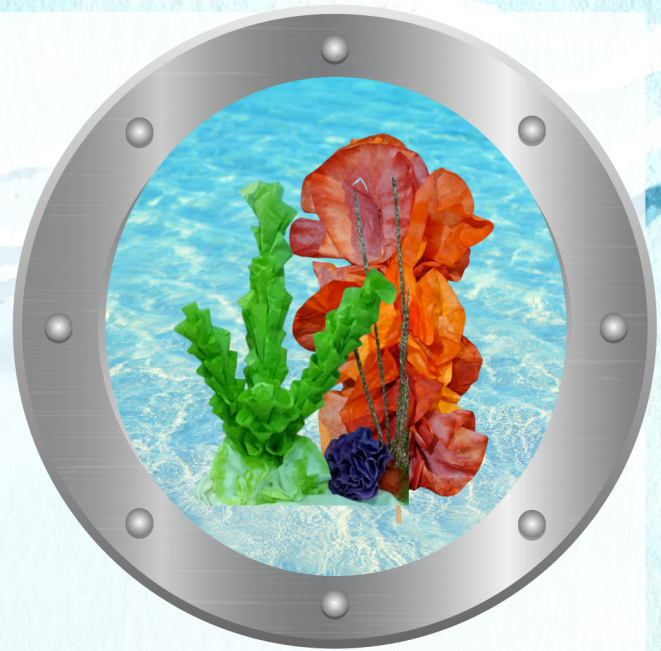
## coffee filter tall coral & seaweed

### supplies

- Coffee filters
- Food coloring or paint
- Skewers
- Glue gun

### directions

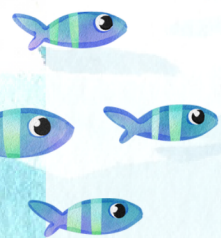
- There are 2 easy options for coloring the coffee filters (Your choice!)
  - OPTION 1: Dye them before making the coral: Dip half-inch stacks of coffee filters into bowls with water and food coloring (liquid or gel works); Sit them on top of a jar to air dry for a couple hours. Toss them in your clothes dryer for about 10 minutes (this will complete the drying process and separate them); Stack them up and they're ready to go.
  - OPTION 2: Spray paint them after the coral is made: Go ahead and craft the coral. When it is complete, lightly spray paint the coral to add the desired color.
- Leave a few inches at the bottom of the skewer available to stick into the base of the coral reef.
- Add some hot glue to an inch or two of the skewer.
- Pinch the bottom of the coffee filter and stick it onto the skewer.
- Add more coffee filters around each side of the skewer for a rounded effect.
- Continue this process of adding filters all the way to the top of the skewer. Feel free to experiment with alternating colors and combining skewers to make it more interesting.
- Please make 12 corals or seaweeds (they will each have a unique look!).





# ADOPT A PROP

## cricut fish



### supplies

- Colorful paper
- Cricut machine

### directions

- Cut out scores of paper fish for us to use to create fun schools of fish in the stairwells and other hallways.



Thanks to [PressPrintParty.com](http://PressPrintParty.com) for posting this idea with pictures!





# ADOPT A PROP

## cupcake liner fan coral

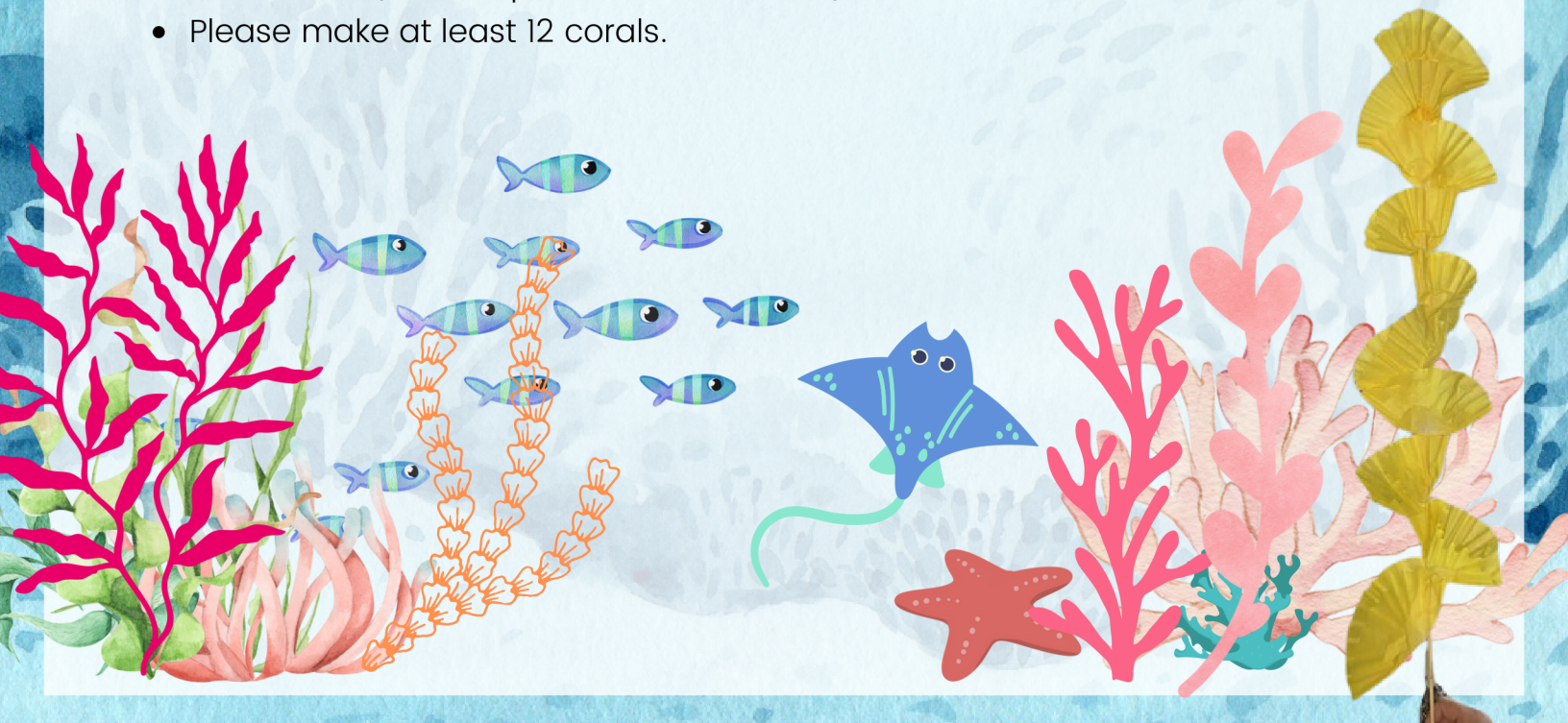


### supplies

- Colored cupcake liners
- Long skewers (18" - 32")
- Paint in similar color as cupcake liners
- Hot glue (or good tacky glue)

### directions

- Paint the skewers a similar color as cupcake liners (spray paint or acrylic both work well)
- Fold a cupcake liner in half and bunch at the bottom
- Beginning about 6" from the bottom of the skewer, dab hot glue on the skewer and press the cupcake liner onto the glue so that the cupcake liner fans to the left of the skewer
- For the next cupcake liner, fan it to the right of the skewer.
- Continue alternating the direction of the cupcake liners until reaching the top of the skewer (see the picture for reference).
- Please make at least 12 corals.





# ADOPT A PROP

## cut out wall decor



### supplies

- Printed pages with ocean items (provided)
- Scissors

### directions

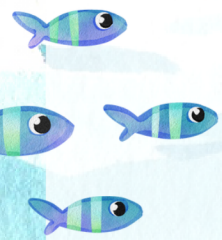
- Cut out decor that we can use on the walls and in coral reefs
- If items were grouped together when you received them, please keep the cut-outs grouped together too





# ADOPT A PROP

## egg carton barnacles

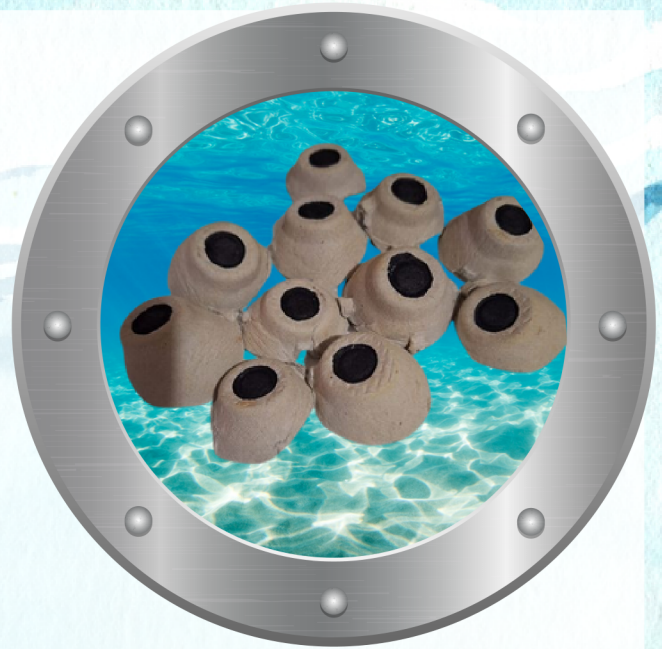


### supplies

- Egg Cartons
- Scissors or knife
- Sharpie in brown or black
- Glue gun

### directions

- Cut apart the egg carton so that you have individual “cups.”
- Turn them over and color in a circle with the Sharpie.
- Use the glue gun to attach the “barnacles” together in clusters.
- Please make at least 12 barnacle clusters.





# ADOPT A PROP

## ice cooler treasure chest

### supplies

- Styrofoam Cooler
- Paint
- Embellishments such as ribbon, buckles, rivets, etc.

### directions

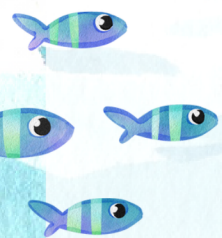
- This is a creative project that is entirely up to you!
- We would love one or two treasure chests to add to our undersea decor.
- I recommend scouring Google and Pinterest for some ideas and then deciding on a design that works well for you and that you would find fun to make. There is no right or wrong way to make this...it's all up to you!
- Let us know if you need any supplies!





# ADOPT A PROP

## jellyfish



### supplies

- Ribbons, crepe, cellophane, loofah sponges
- Optional: fairy lights
- Bowls & recycled clear cake tops
- Scissors
- Glue gun
- Wire or fishing line
- Heat knife (to pierce hole in plastic bowls)



### directions

- Create a hole in the bottom of a bowl.
- Run a wire or fishing line through the hole to create a hanger for suspending from the ceiling. You can use hot glue or packing tape to secure the ribbon/wire.
- Cut ribbons, strands of loofah sponges, streamers, etc. (varying sizes and lengths) —some mixes of same color, some of varied.
- Glue the ribbons at one end inside the bowl or lantern.
- Curl ribbons if necessary with scissors or fingers.
- Please make at least 12 jellyfish





# ADOPT A PROP

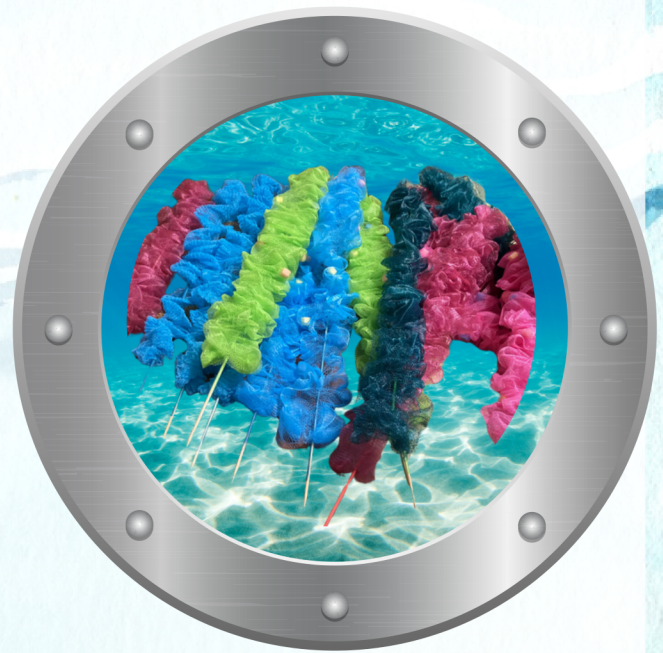
## loofah sponge stick coral

### supplies

- Giant skewers
- Paint (tempera, acrylic, or spray paint)
- Loofah sponges
- Glue dots, 2-sided tape, or a glue gun

### directions

- Cut the string that holds the loofah sponge together.
- Use the skewer like a needle to “thread” the loofah sponge, stretching it out along the length of the skewer.
- Use the glue or tape to secure the bottom of the loofah sponge 2 or 3 inches from the bottom of the skewer.
- If you find it helpful, you can also use glue or tape to secure the loofah in a few places along the skewer (optional).
- Finally, use the glue or tape (or a string tied around it) to secure the top of the loofah sponge to the top of the skewer.
- Please make at least 12 stick corals.





# ADOPT A PROP

## make a coral reef

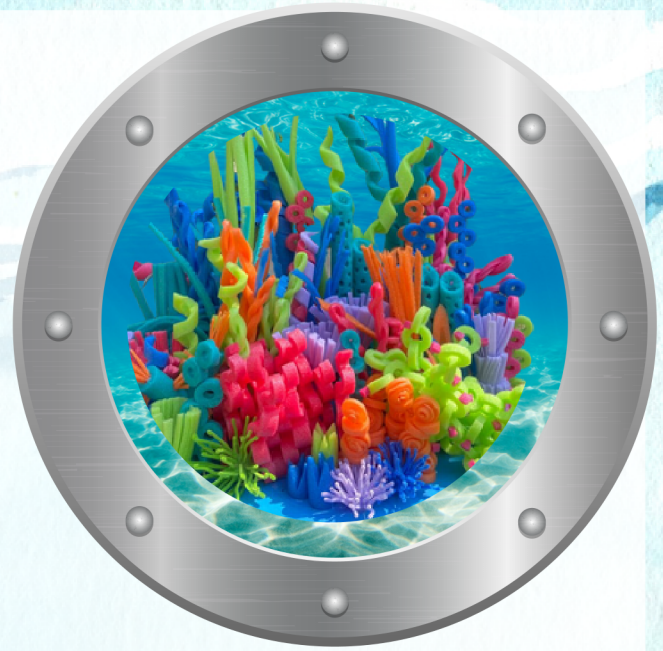


### supplies

- 100% up to you!

### directions

- This is a creative project that is entirely up to you!
- As our building is transformed into an undersea adventure, coral reefs will be key in decorating our large spaces as well as classrooms and corners of hallways. We need big coral reefs and smaller coral reefs. Many of the Adopt-a-Prop items will be used in putting together some coral reefs, but if you love to be creative and would like to take on a coral reef of your own, we'd be thrilled!
- Pinterest and Google have plenty of ideas using a plethora of different materials. Take a look and dive into whatever seems the most fun to you!





# ADOPT A PROP

## ocean portholes

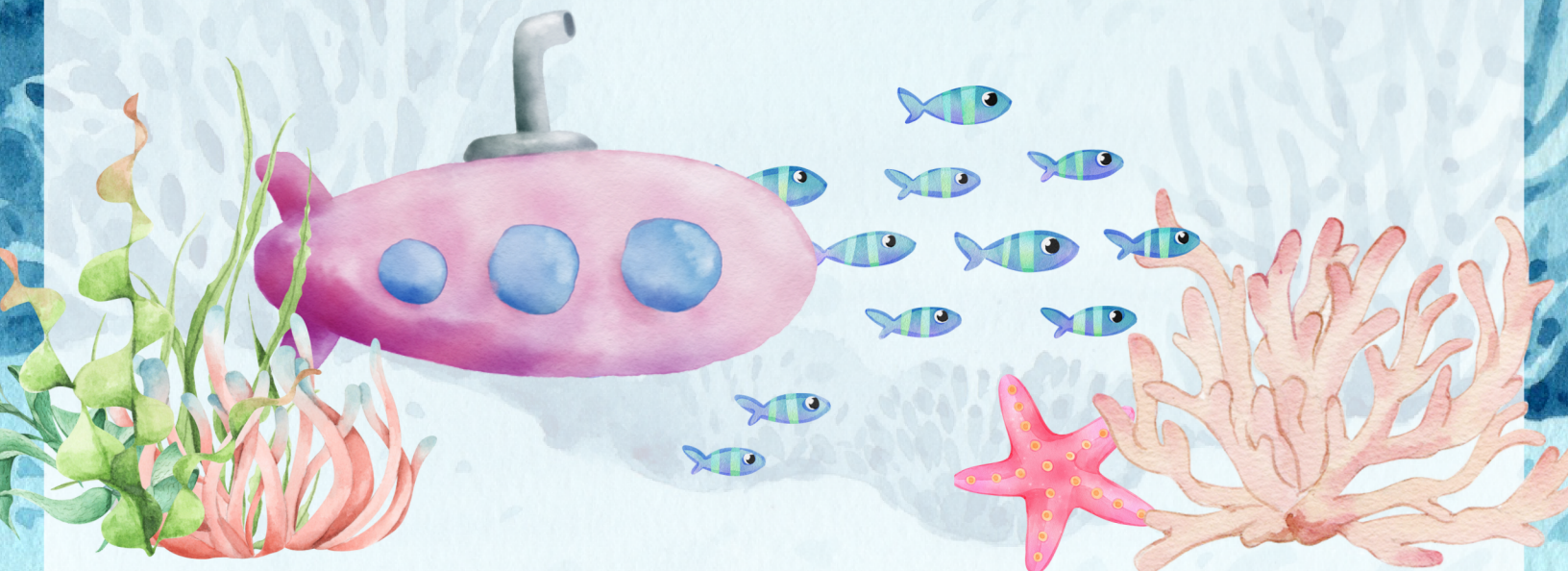


### supplies

- Printouts of ocean portholes
- Scissors
- Glue sticks
- Scotch tape

### directions

- Line up the 2 pages that form the porthole. Then loosely cut around the outside edges of the porthole, leaving a little bit of a margin.
- On the top piece of the porthole, carefully cut the white trim completely off the bottom of the page. NOTE: On the bottom half of the porthole, you will NOT cut the white trim off. This will allow for overlap so that glue can be applied.
- On the bottom half of the porthole, apply glue stick along the top edge where the white trim still shows.
- Place the top half of the porthole on the bottom half, carefully lining up the picture.
- Turn the porthole over and tape it along the seam to secure it.
- Once the full porthole is glued and taped, carefully cut around the outside edges so that the round porthole is ready to attach to the wall.





# ADOPT A PROP

## packing peanut coral

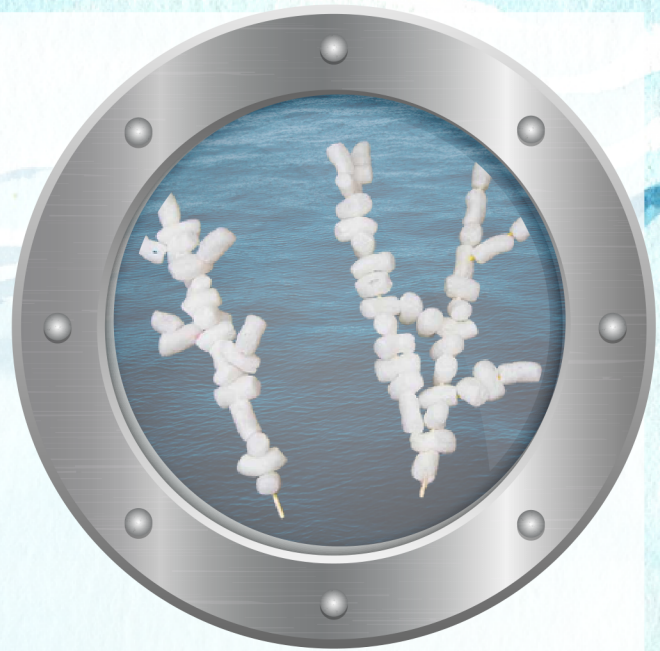


### supplies

- Skewers
- Packing peanuts
- Hot glue
- Acrylic Paint
- Spray bottle

### directions

- Stick the skewer through the packing peanuts, turning the peanuts various directions, until the skewer is completely covered (other than the bottom 2 or 3 inches)
- On some of them, use glue gun to attach more than one skewer. Feel free to cut skewers into smaller pieces to form smaller “branches” (see picture in porthole).
- Because spray paint can dissolve a packing peanut, mix some acrylic paint with water (50-50). Lightly spray the peanuts to give them some color. It is OK if they are not saturated with color...it will just add texture to our reefs!
- Please make at least 12 corals.





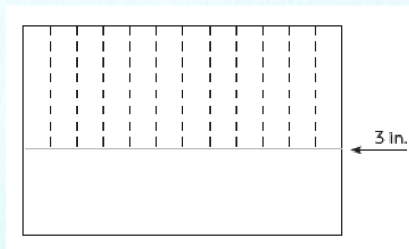
# ADOPT A PROP

## paper anemones



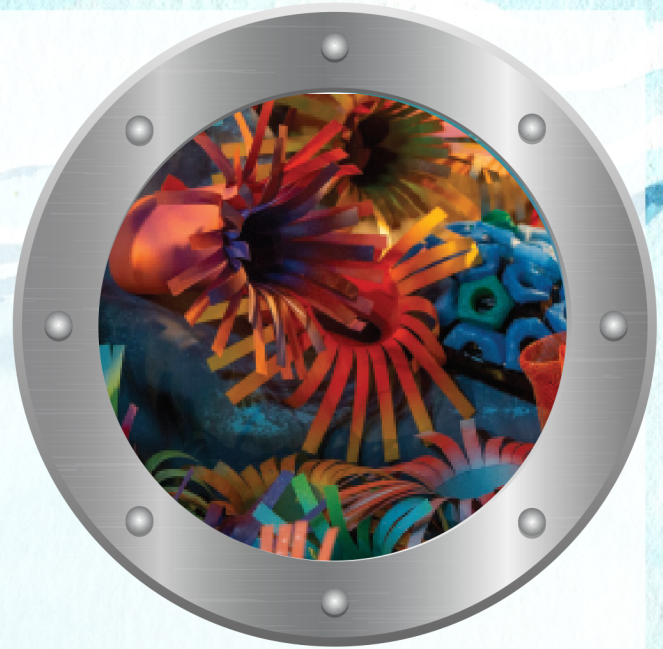
### supplies

- Colored paper
- Paper cutter (or X-Acto knife)
- Ruler
- Pencil
- Tape
- Spray paint



### directions

- On the short edge of the paper, measure in 3 inches and draw a faint line down the paper.
- Turn the paper on the long edge and mark every  $\frac{1}{4}$  to  $\frac{1}{2}$  inch
- Make a cut from the edge of the paper to the 3-inch line every  $\frac{1}{4}$  to  $\frac{1}{2}$  inch all across the length of the paper
- Roll the paper into a tube, and tape it together at the base.
- Optional: Lightly spray paint the tips for some added color.
- Also Optional: Once the tubes are formed, place one tube inside another for a fuller effect.





# ADOPT A PROP

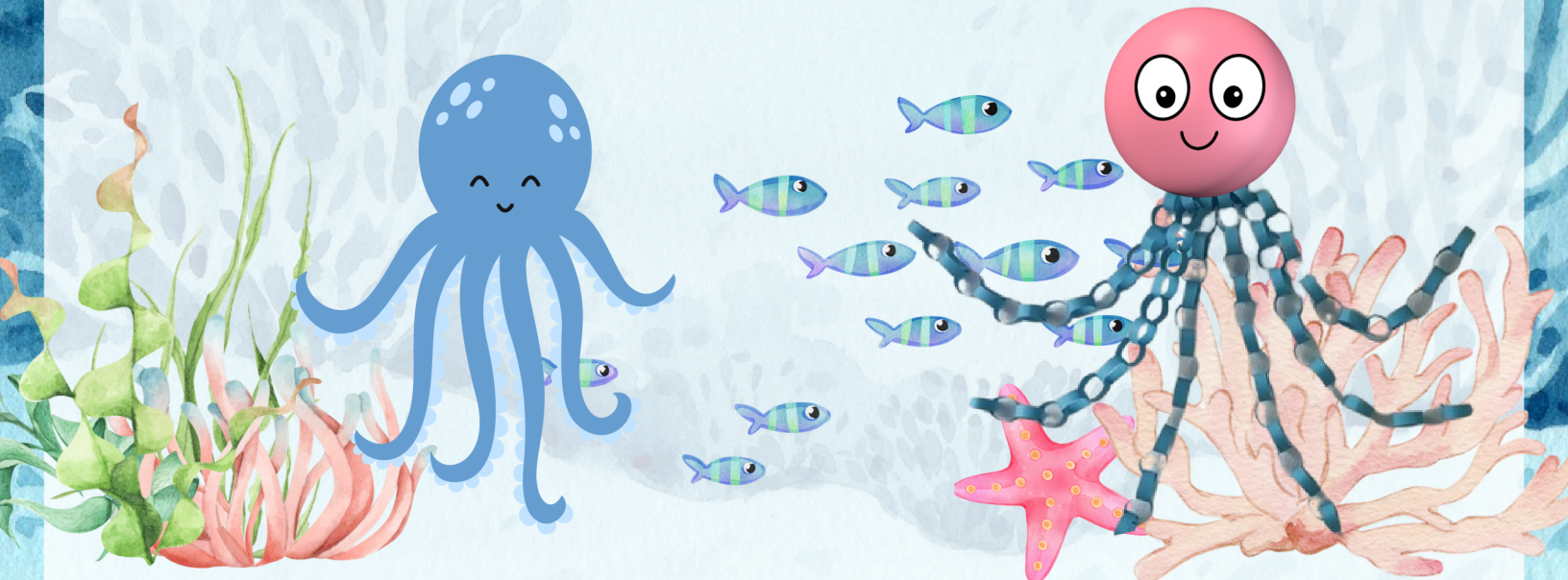
## paper chain octopus

### supplies

- Large plastic ball (provided)
- Colored paper
- Paper cutter or scissors
- Stapler, clear tape, or glue dots
- Clear packing tape

### directions

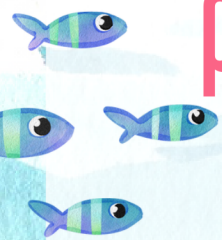
- Cut colored paper in strips approximately 2" x 8.5" (about 25 per arm)
- Take the first strip and loop it into an O shape. Staple (or glue or tape) the two ends together.
- Then take a second strip and loop it through the first O. Keeping the two linked, wrap the ends of the second strip together and attach them.
- Continue adding links until you have reached 25 links. 1 octopus arm done!
- Make 7 more for a total of 8 octopus arms.
- Using clear packing tape, attach the first link of each "arm" to the bottom of the ball (this can be done at the church so it isn't hard to transport it).
- Finally, be sure to name Mr. or Mrs. Octopus. This kids will want to know! 😂





# ADOPT A PROP

## pipe cleaner coral

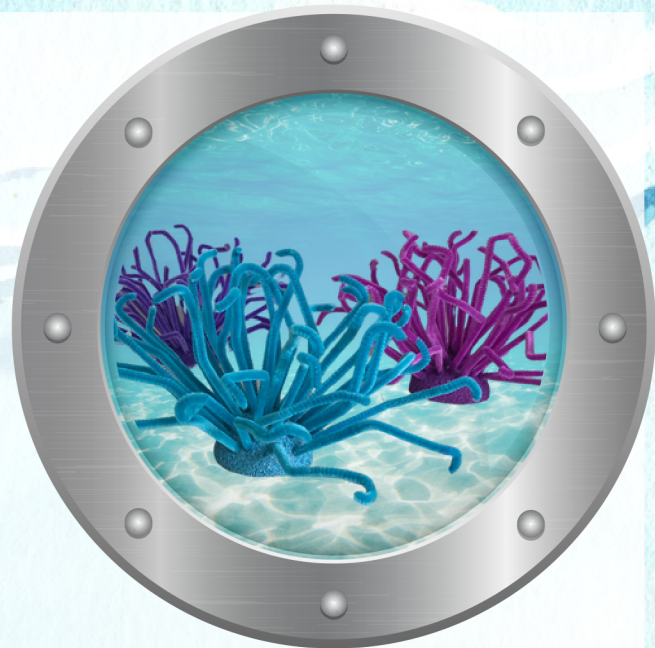


### supplies

- Styrofoam Balls
- Pipe cleaners (cut in half)
- Acrylic paint
- Spray bottle

### directions

- Cut a Styrofoam ball in half
- Mix 50/50 acrylic paint and water in a small spray bottle
- Using the acrylic mix, "spray paint" the Styrofoam ball a similar color as the pipe cleaners (Note: actual spray paint will likely melt the Styrofoam; thus, the acrylic mix)
- Use your finger to make twists and curls in the pipe cleaner.
- Stick one end of the pipe cleaner securely into the Styrofoam ball.
- Continue adding pipe cleaners until the look is full. (Others have said that it takes about 20 pipe cleaners cut in half to give the coral a nice, full look.)
- No 2 corals need to look alike. Feel free to be creative with your twists and turns!
- Please make at least 12 pipe cleaner sea corals.





# ADOPT A PROP

## plastic bottle coral



### supplies

- Plastic bottles (various shapes and sizes)
- Candle, lighter, or heat gun
- Scissors and/or razor knife
- Spray paint (bright coral reef and seaweed colors)

### directions

- This project involves some experimenting
- Cut the top off of a plastic bottle
- Make multiple cuts vertically from the cut end toward the bottom (Note: save the top because the same process can be done using the top of the bottle)
- Trim the slit to a point at the tips
- Hold the bottle over a candle (or use a lighter) to melt the plastic just enough to make it curve and change its shape (carefully use your hand to shape it)
- Continue until your bottle looks like a plant that can be spray painted and added to a coral reef display (If you are not able to spray paint, we can do that later)



Top of 20 oz.  
Sprite bottle



Bottom of 20 oz.  
Sprite bottle





# ADOPT A PROP

## pool noodle coral

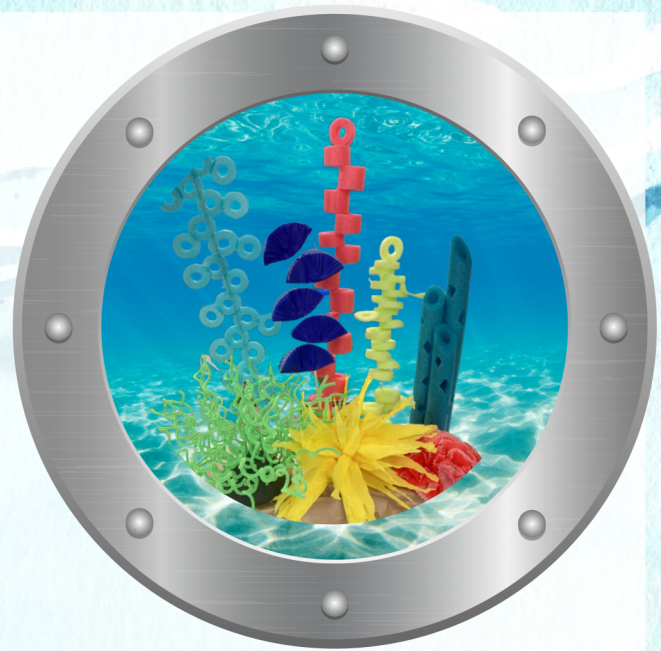


### supplies

- Pool noodles
- knife (or hot knife)
- long skewers (or heavy gauge wire)
- optional: hot glue

### directions

- Slice the pool noodle in 1/2" to 1" disks.
- Slide the pool noodle disks onto a skewer or wire.
- Optional: Use hot glue to add another layer of pool noodle disks (see image on bottom left).
- Note: there is no right or wrong way to do this. Look at the pictures on this page, and feel free to look at Google/Pinterest. Be creative and feel free to make each coral creation a one-of-a-kind.
- Please make at least 12 corals.





# ADOPT A PROP

## pool noodle coral or seaweed

### supplies

- Pool noodles (brightly colored)
- Utility knife
- Painters Tape
- Sharpie

### directions

- Watch this video to see various methods of cutting pool noodles for coral: <https://www.youtube.com/watch?v=KsNqhmtTNO8>
- The goal of these pool noodles is to create tall and curvy coral to set the stage behind the smaller items in the coral reefs.
- Use the Sharpie to draw 3 equidistant lines on the base of the pool noodle.
- Beginning at each line, use painters tape to spiral around the pool noodle. Then follow each tape spiral with the utility knife to cut around the pool noodle, leaving about a foot with no cuts to keep the noodle together. Do not separate the cuts until you have followed all 3 strands of tape. Then pull apart the pieces to see the curvy cuts.
- Please make at least 12 curvy pool noodle corals. Feel free to try some of the other cuts as well. Variety will make our coral reefs fun and interesting!





# ADOPT A PROP

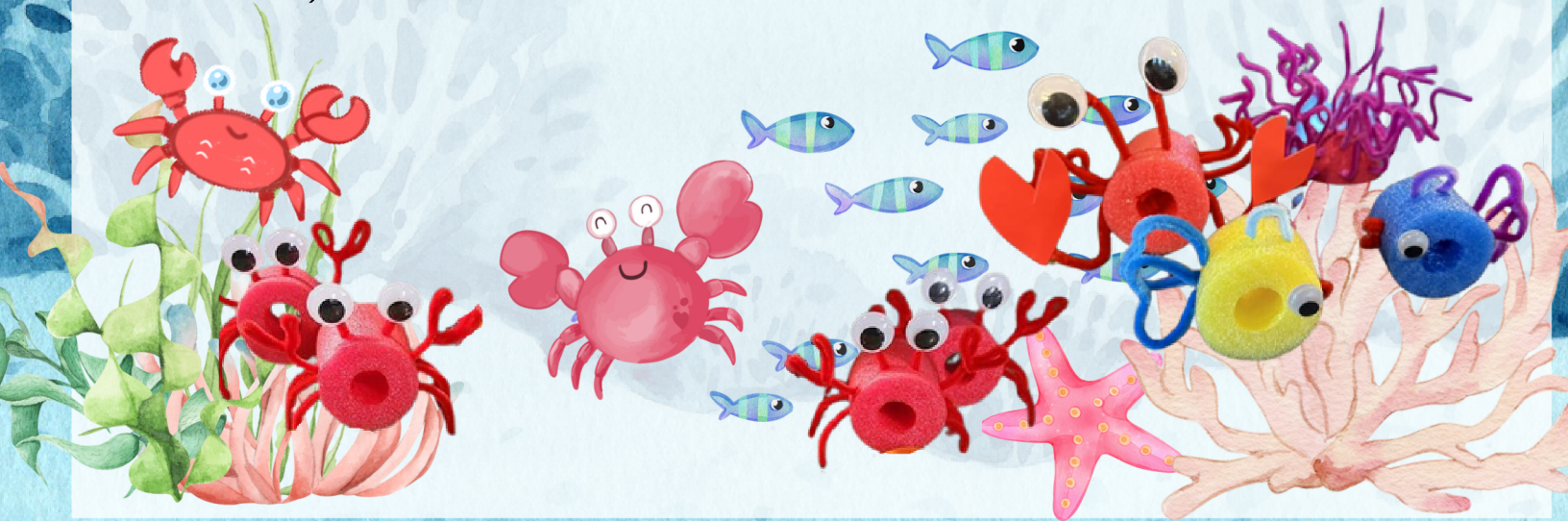
## pool noodle crabs

### supplies

- Red pool noodles
- Hot knife or regular knife
- Red pipe cleaners (4 per crab)
- Googly eyes (2 per crab)
- Glue gun (glue dots might work too)

### directions

- Slice the pool noodle into approximately 4 inch lengths
- Cut a pipe cleaner in half. On each piece twist one side into a spiral (like a lollipop).
- Put a dab of hot glue on the spiral portions and attach the googly eyes. Poke the straight sides into the top of the pool noodle for the 2 eyes.
- Cut 2 more pipe cleaners into 4ths and poke each piece into the side of the crab as a leg, bending it in the middle like the picture above (crabs actually have 10 legs, but who's counting?!).
- Take one more pipe cleaner and cut it in half. With each piece, bend the end to form one pincer, then continue bending to form a second pincer (twist it 180 degrees to make it hold). Stick the straight side into the pool noodle to attach the claws. You may want to play with a pipe cleaner or two to get the hang of this.
- Please make at least 12 crabs (one pool noodle should make 11 or 12 4-inch crabs).





# ADOPT A PROP

## pool noodle fish

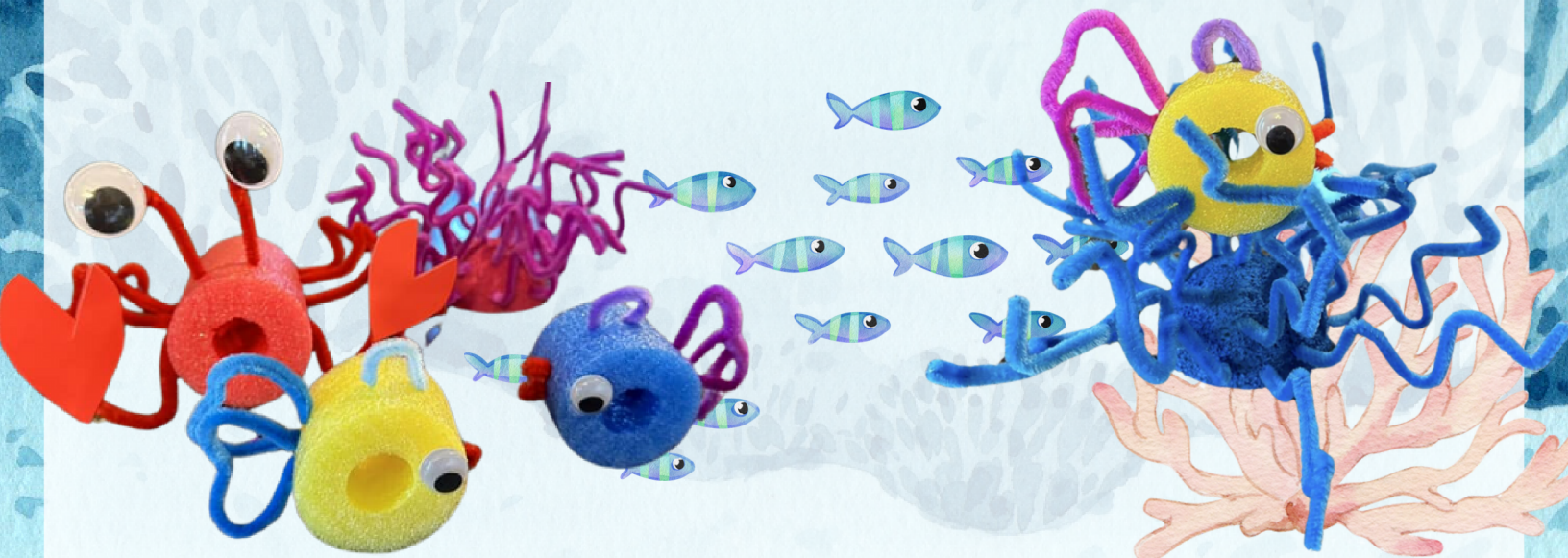
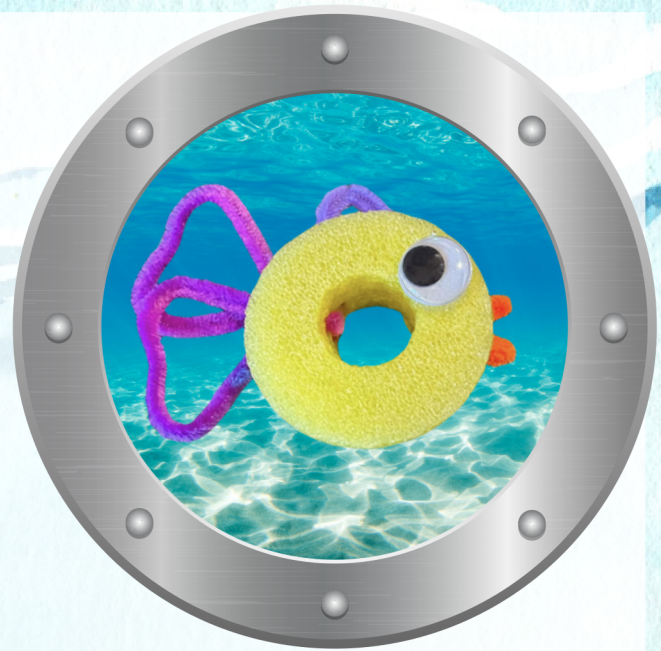


### supplies

- Pool noodles
- Pipe cleaners
- Googly eyes
- Glue gun or tacky glue
- Scissors and utility knife (for cutting pool noodle)

### directions

- Cut a pool noodle into 2" pieces.
- Cut a pipe cleaner in half. Using one of the halves, create a tail by poking each end of the pipe cleaner into the pool noodle in the same place. Then shape the pipe cleaner kind of like a heart.
- Repeat this with the second half of the pipe cleaner to form the 2nd tail piece.
- Cut another pipe cleaner into fourths. Poke one piece into two places on the top of the pool noodle to form a fin.
- Cut a red pipe cleaner into eighths. Fold a piece in half to form the bottom lip and stick it into the right side of the pool noodle. Then fold another piece in half to form the top lip and stick it into the pool noodle.
- Use a glue gun or good, tacky glue to stick a googly eye on each side.





# ADOPT A PROP

## sea life silhouettes

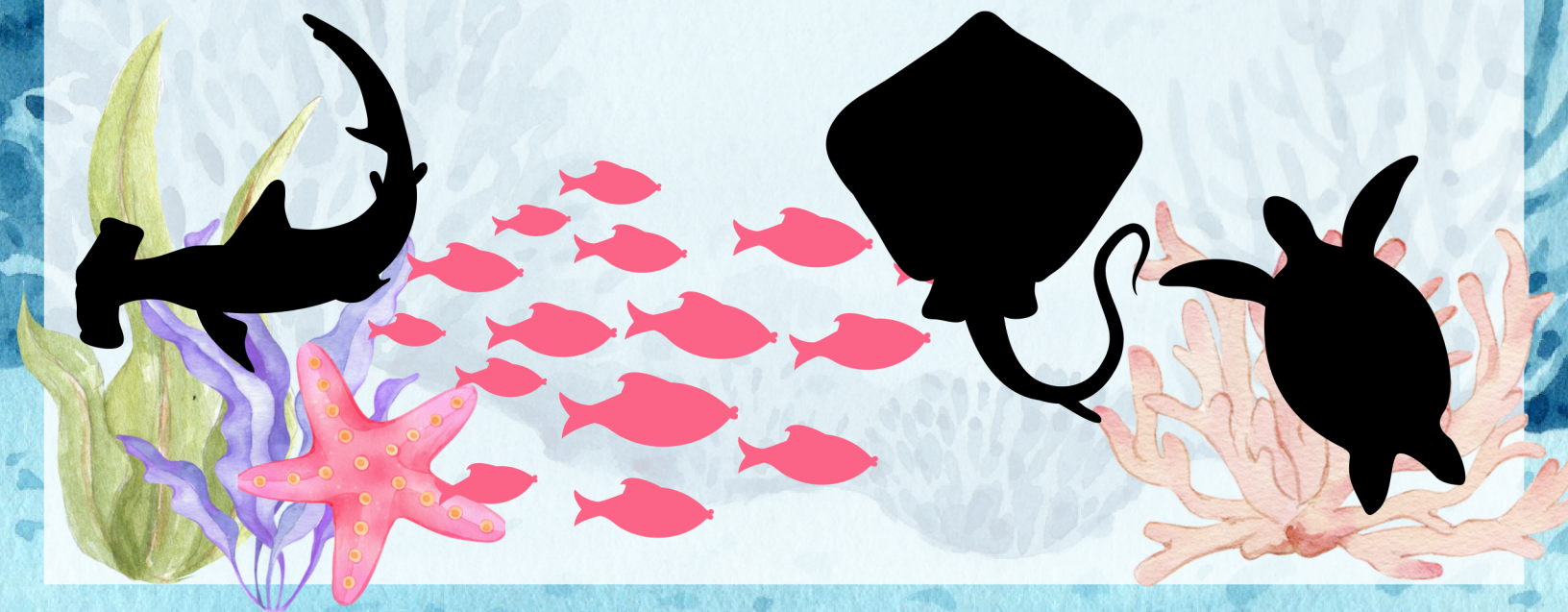


### supplies

- Templates for silhouettes
- Black posterboard and/or construction paper
- Scissors and pencil
- Projector (unless you are an artistic genius who can free hand!)

### directions

- Project the image of a sea animal onto a large, black posterboard
- Trace it on the black posterboard
- Cut out the shape
- Note: Try to use a full posterboard for the larger animals. For smaller animals, use portions of the posterboard so that more than one animal can be cut out of a sheet of posterboard. Varied sizes will make the ceiling more interesting. These silhouettes will be placed on blue tablecloths draped across the ceiling in hallways to give the effect that sea animals are swimming above the kids' heads.





# ADOPT A PROP

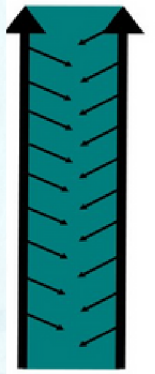
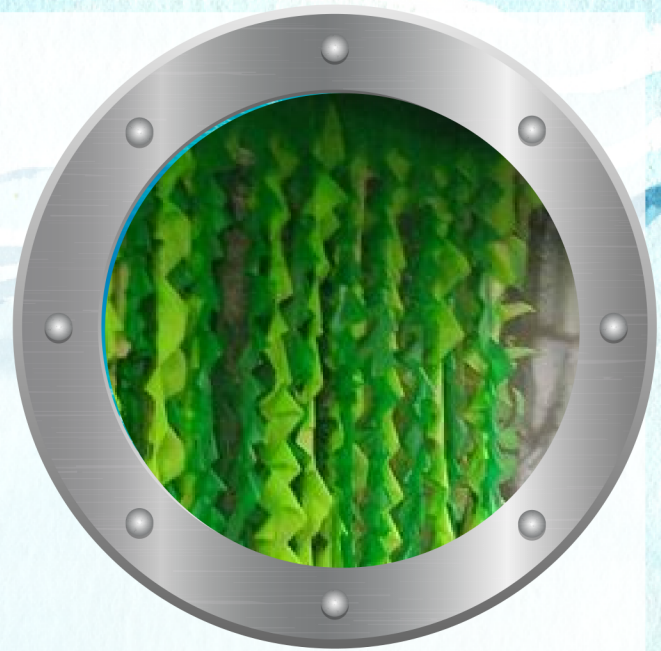
## seaweed vines (and ocean waves)

### supplies

- Tablecloths (shades of green and blue)
- Scissors (nice, sharp ones!)

### directions

- Here's a video that shows how to cut the tablecloths:  
<https://www.youtube.com/watch?v=FoILIYP79s&t=191s>
- Partially unfold the plastic tablecloth until it is long and thin (there should still be 4 layers).
- Slice up the right and left side of the folded tablecloth to separate the layers (but leave them stacked as is).
- Make diagonal cuts from the edge toward the center, alternating sides (see the diagram). Be careful not to cut all the way to another cut.
- You can leave the tablecloths stacked and gently roll them to bring to the church. We will open them when we are ready to hang them for decor.
- Please cut at least 12 tablecloths.





# ADOPT A PROP

## sunken ship



### supplies

- Large sheets of cardboard
- Maybe a used pallet
- Paint
- Paper or recyclables for embellishments
- Possibly tubes for a sail mast/cross
- Your fabulous imagination!

### directions

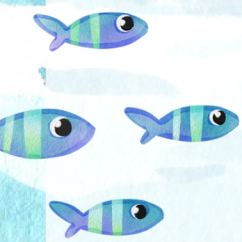
- This is a creative project that is entirely up to you!
- We'd love a sunken ship for our Atrium display.
- Ship should be anywhere between 8 and 12 feet long (we're flexible!).
- I recommend scouring Google and Pinterest for some ideas and then deciding on a design that works well for you and that you would find fun to make.
- Let us know if you need any supplies! We likely have some pallets available if you'd like to go that direction.
- Note: Group Publisher has step-by-step directions on their version of a sunken ship. This is more complicated than what we need, but I'm happy to provide it if it would be helpful.





# ADOPT A PROP

## tissue paper coral



### supplies

- Colored tissue paper (8 to 10 sheets per coral)
- String or fishing line
- Scissors

### directions

- Neatly stack 8 to 10 sheets of tissue paper on top of one another.
- Beginning at one end, fan fold the entire stack of tissue paper (about 1 inch per fold)
- Tie a string around the center of the entire fanfold.
- Use the scissors to cut each end of the tissue paper to a point (like a triangle)
- Then one sheet at a time, carefully separate it and pull it gently toward the string.
- Continue until all of the sheets have been fluffed and separated from one another. Gently shape the coral.
- You'll find a good tutorial with pictures here:  
<https://hellocreativefamily.com/how-to-make-diy-giant-tissue-paper-flowers-tutorial/>





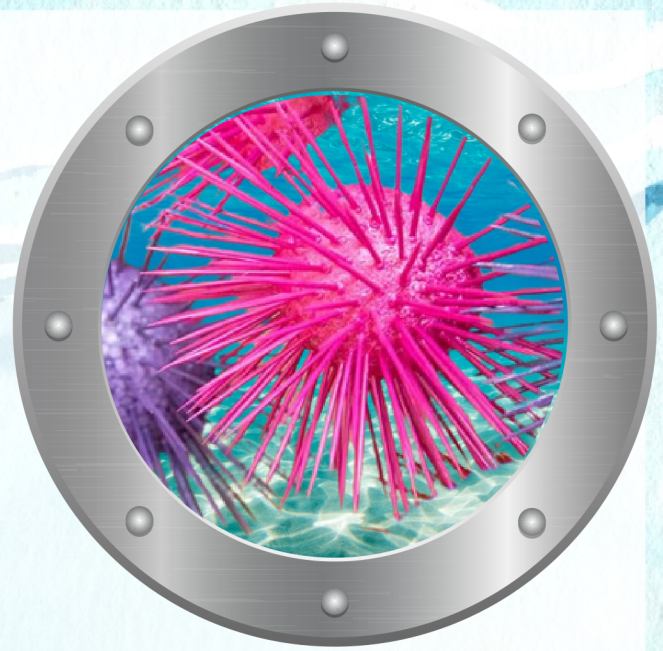
# ADOPT A PROP

## toothpick sea urchin



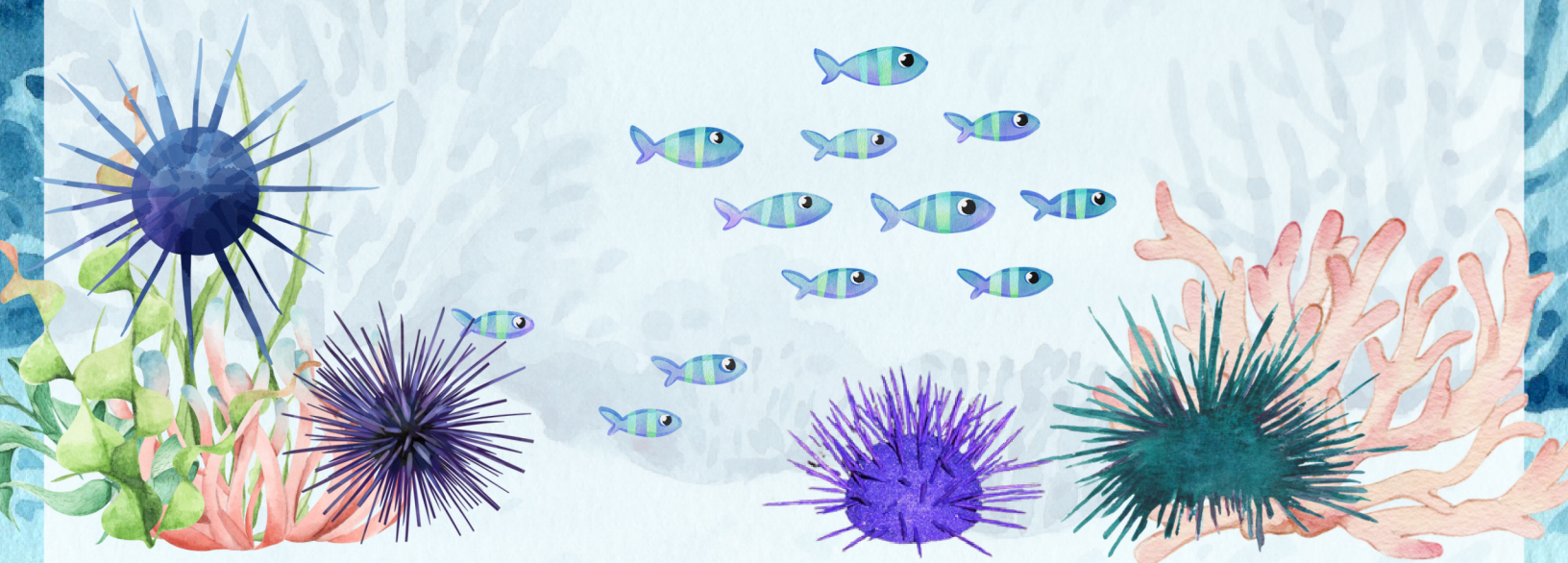
### supplies

- Styrofoam balls
- Toothpicks
- Spray paint



### directions

- Cut the Styrofoam ball in half so that you have 2 semicircles.
- Using one piece of the Styrofoam, stick the toothpicks into the Styrofoam far enough in to securely stick, but no further than is necessary.
- Continue sticking toothpicks into the Styrofoam ball until it looks like a sea urchin.
- Lightly spray paint the entire urchin (note: spray paint can melt the Styrofoam, so be sure to spray lightly).
- On some of your sea urchins, consider lightly spraying the tips of the toothpicks a different color for a creative two-toned look.
- We would like lots of sea urchins to include in our coral reefs, so please try to make at least 12.





# ADOPT A PROP

## tube coral

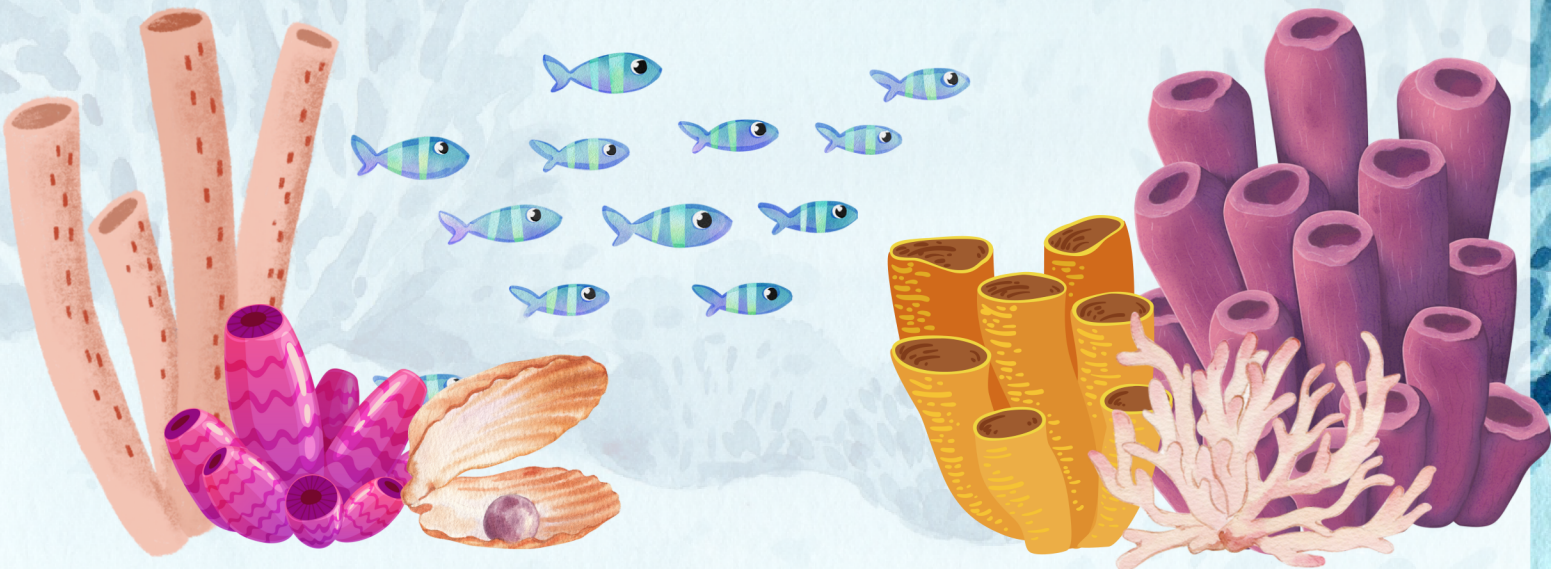


### supplies

- cardboard tubes of various sizes (Note: tubes can also be formed with cardstock, poster board, etc.)
- scissors
- glue gun
- spray paint

### directions

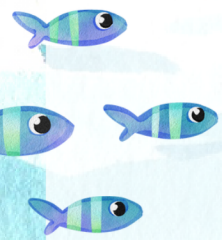
- Cut one end of each tube at an angle (see picture)
- Use a glue gun to attach the tubes together. Make sure that the bottoms of the tubes remain level so that the entire piece will stand on its own.
- Note: No two corals need to look alike. They can be different sizes, heights, widths, etc. Variety will make our coral reefs beautiful!
- Spray paint the entire piece in bright coral colors. It may take more than one coat to cover all the nooks and crannies.
- Note: If you would prefer not to paint, feel free to bring it in unpainted and we'll do the painting.





# ADOPT A PROP

## tube sponges

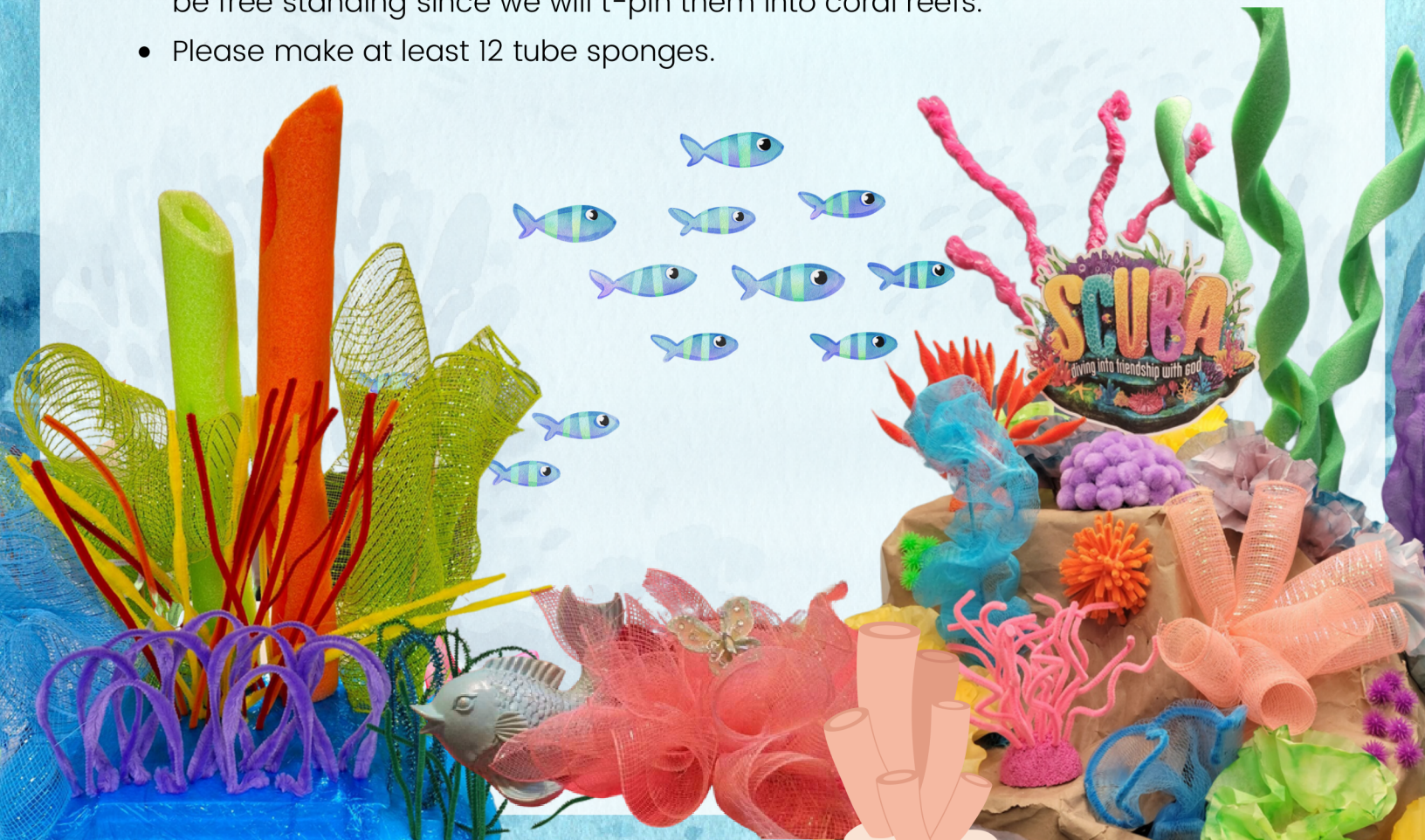
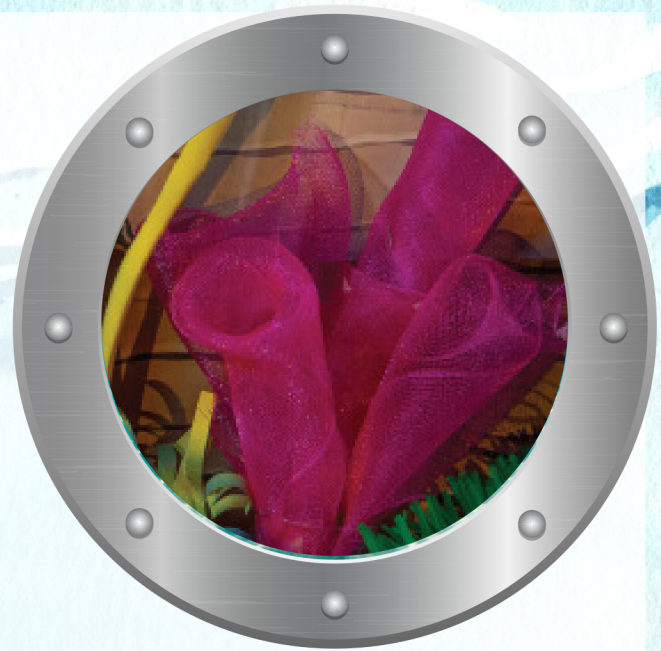


### supplies

- Mesh ribbon (10" wide works well)
- Stapler
- Scissors

### directions

- Cut 5-7 pieces of ribbon in varying lengths no longer than about 18 inches.
- Roll each piece of ribbon to create a tube, turning the ribbon edge under while rolling it.
- Staple to secure the tube.
- Arrange in groups and staple them to each other. It is not necessary for them to be free standing since we will t-pin them into coral reefs.
- Please make at least 12 tube sponges.





# ADOPT A PROP

